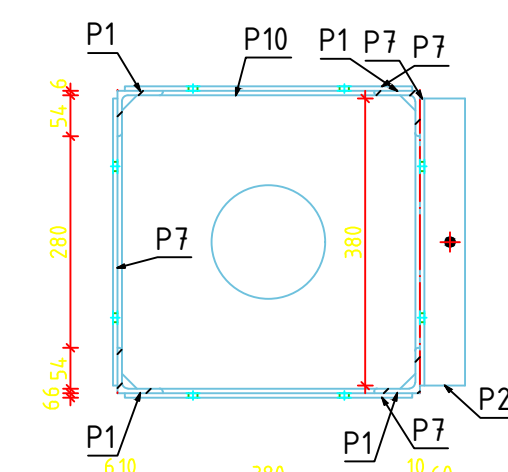
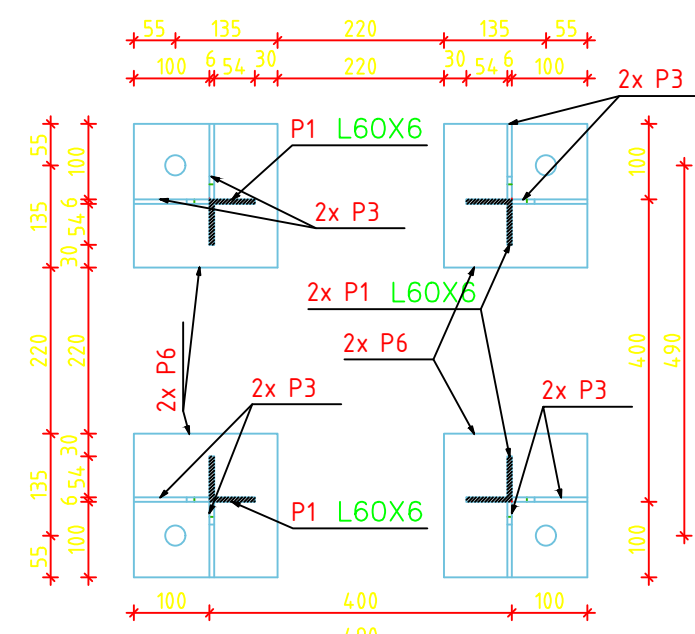
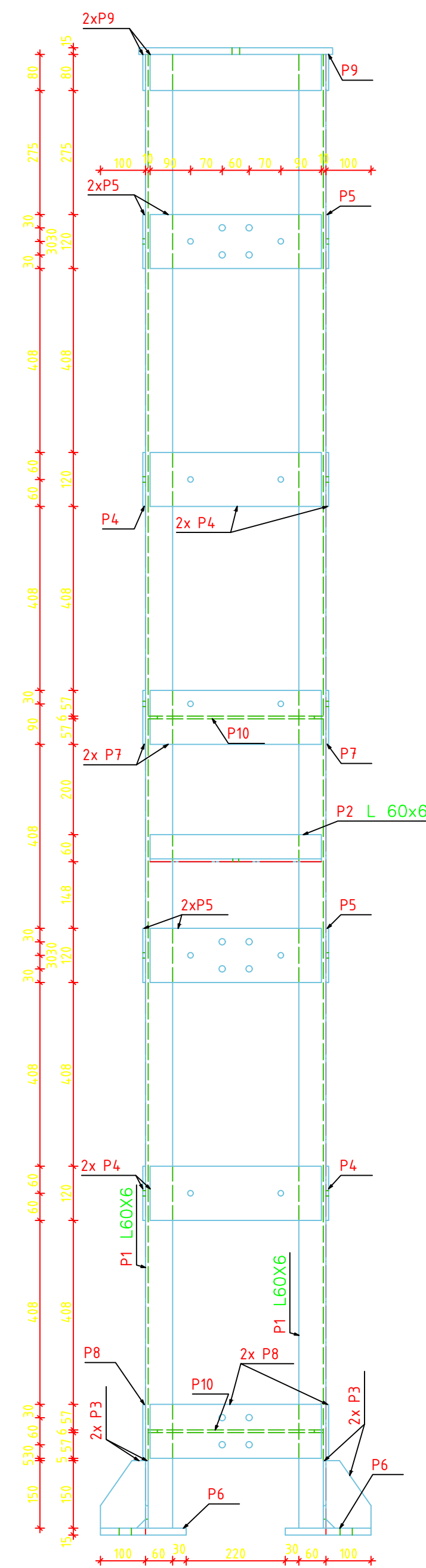

$$E - E$$


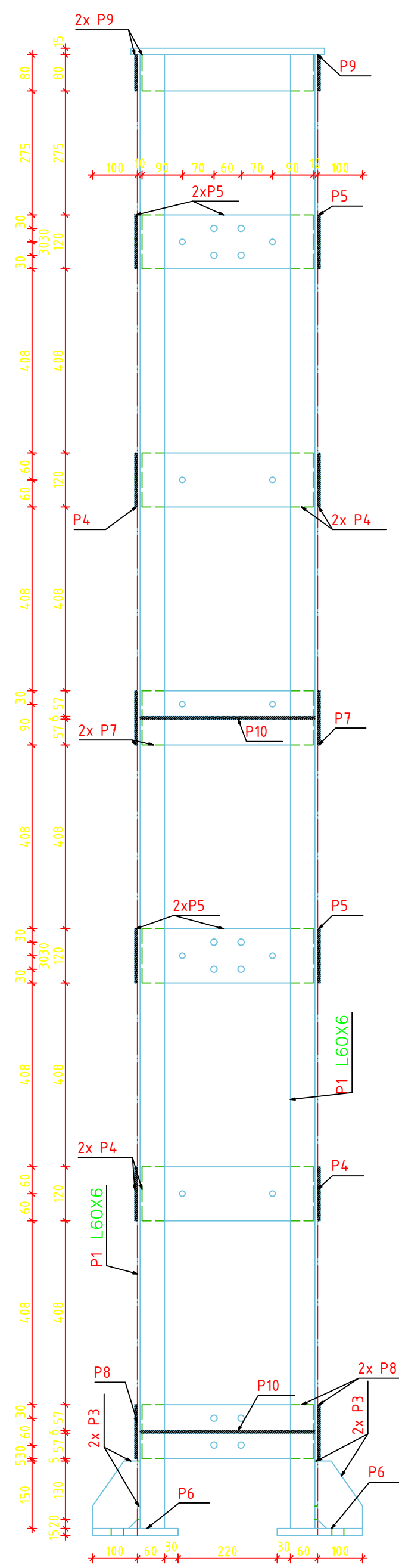
D - D



A - A



B - B



[ - [

This isometric view shows the completed tower. It features a square top platform with four mounting holes. The tower is composed of vertical posts and horizontal cross-braces. The cross-braces are secured with screws. The base is supported by four L-shaped feet, each with a circular hole for a screw. The entire structure is shown in a light blue line-art style.

| Mark | Quantity | Description                 | Length | Grade  | Part weight | Total weight |
|------|----------|-----------------------------|--------|--------|-------------|--------------|
| P1   | 4        | L60X6                       | 3270   | S355J2 | 17.7        | 70.9         |
| P2   | 1        | L 60x6                      | 380    | S355J2 | 2.1         | 2.1          |
|      | 5        | Combined Total              |        |        |             | 73           |
| P3   | 8        | PL 6x100x150                | 150    | S355J2 | 0.5         | 4.3          |
| P4   | 8        | PL 6x120x380                | 380    | S355J2 | 2.1         | 17.2         |
| P5   | 8        | PL 6x120x380                | 380    | S355J2 | 2.1         | 17.2         |
| P6   | 4        | PL 15x190x190               | 190    | S355J2 | 4.3         | 17           |
| P7   | 4        | PL 6x120x380                | 380    | S355J2 | 2.1         | 8.6          |
| P8   | 4        | PL 6x120x380                | 380    | S355J2 | 2.1         | 8.6          |
| P9   | 4        | PL 6x80x360                 | 380    | S355J2 | 1.4         | 5.7          |
| P10  | 2        | PL 6x388x388                | 388    | S355J2 | 7.1         | 14.1         |
| P11  | 1        | PL 15x430x430               | 430    | S355J2 | 21.8        | 21.8         |
|      | 43       | Combined Total              |        |        |             | 114.4        |
|      |          | TOTAL PENTRU UN SUPORT [KG] |        |        |             | 188          |

1. Categoria de importanta a constructiei este C, conform HG 766/97
2. Categoria de executie este B conform STAS 767/0-88
3. Elementele metalice se imbrina intre ele prin sudura in relief, pe tot conturul de contact, grosimea cordonului de sudura fiind 0.7t (t=grosimea minima a pieselor ce vin in contact.
4. Nivelul de acceptare al imbinărilor sudate este C conform Normativului C 150 - 99
5. Confecțiile metalice se vor proteja anticoroziv prin zincare la cald
6. Prezentul plan se citește împreună cu restul planurilor din borderou.

1. Profile laminate S355 J2 conf. SR EN 10029  
2. Table S355 J2 conf. SR EN 10029

[illegible]